

— **FOR LEASE** —

GATOR TOWN & COUNTRY PLAZA

INVESTMENTS 501 N BENEVA RD | SARASOTA, FL 34232



PROPERTY OVERVIEW

- Anchored by Bealls, Planet Fitness, Dollar Tree & Tire Kingdom
- Shadow Anchored by Publix
- Newly Renovated
- GLA of +/- 134,298 SF

LOCATION OVERVIEW

- Located in East Sarasota
- Nearest Intersection: N Beneva Rd. & Fruitville Rd.
- Sarasota County
- Intersection Traffic Count: 65,900 AADT

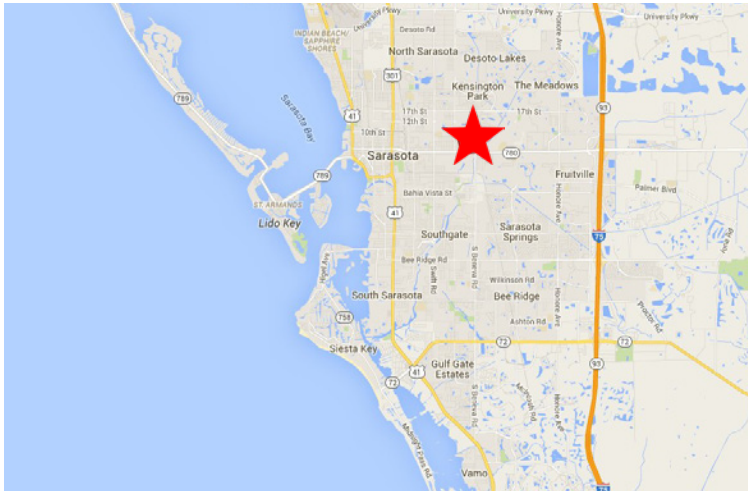
www.GatorInvestments.com

7850 NW 146th Street, 4th Floor | Miami Lakes | FL 33016

James A. Goldsmith, Lic. Real Estate Broker

LEASING INFO: 877.459.9605
Leasing@GatorInvestments.com

The information contained here is subject to errors, omissions and changes without notice. This is being provided without warranty of any kind, either expressed or implied and does not constitute an offer to sell or lease.



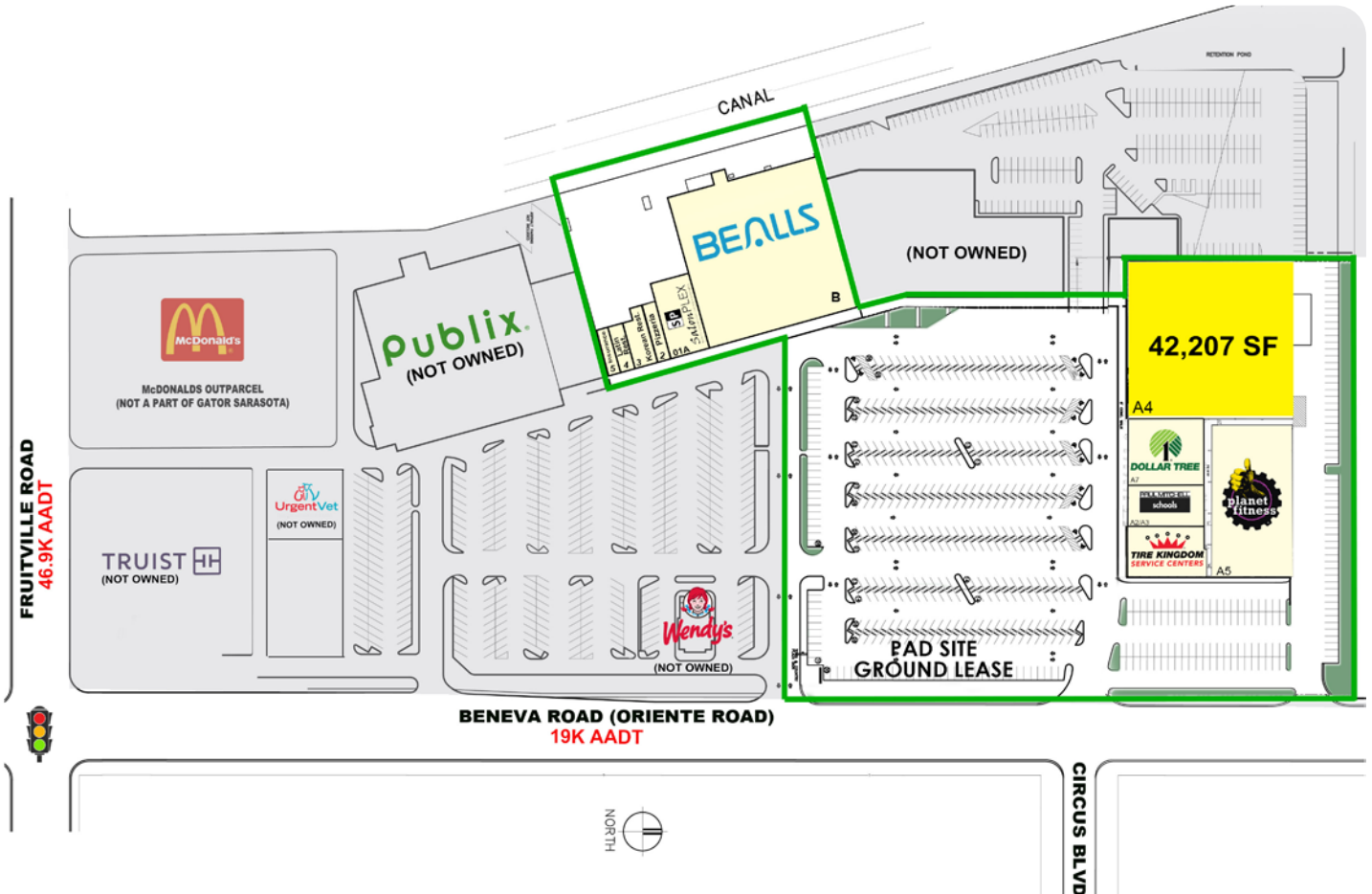
DEMOGRAPHICS

• 2021

**501 N BENEVA RD
SARASOTA, FL 34232**

TRADE AREA	1 MILE	3 MILE	5 MILE
POPULATION	13,198	93,536	179,692
AVG. HH INCOME	\$71,574	\$79,532	\$86,546
AVG. AGE	46	47	49

SPACE AVAILABLE



Owned and Operated By A
GATOR
Affiliated Company

www.GatorInvestments.com

7850 NW 146th Street, 4th Floor | Miami Lakes | FL 33016

James A. Goldsmith, Lic. Real Estate Broker

LEASING INFO: 877.459.9605

Leasing@GatorInvestments.com

The information contained here is subject to errors, omissions and changes without notice. This is being provided without warranty of any kind, either expressed or implied and does not constitute an offer to sell or lease.